

The floor-mounted pedal is composed of a base-plate for mounting in the passenger compartment and a pre-fitted pedal plate (aluminum ADC12, injection molded, black finish, 66 % nylon, 30 % GF).

Two return springs are used to replicate the pedal forces and direction-dependent hysteresis; twin return springs are used for added safety.

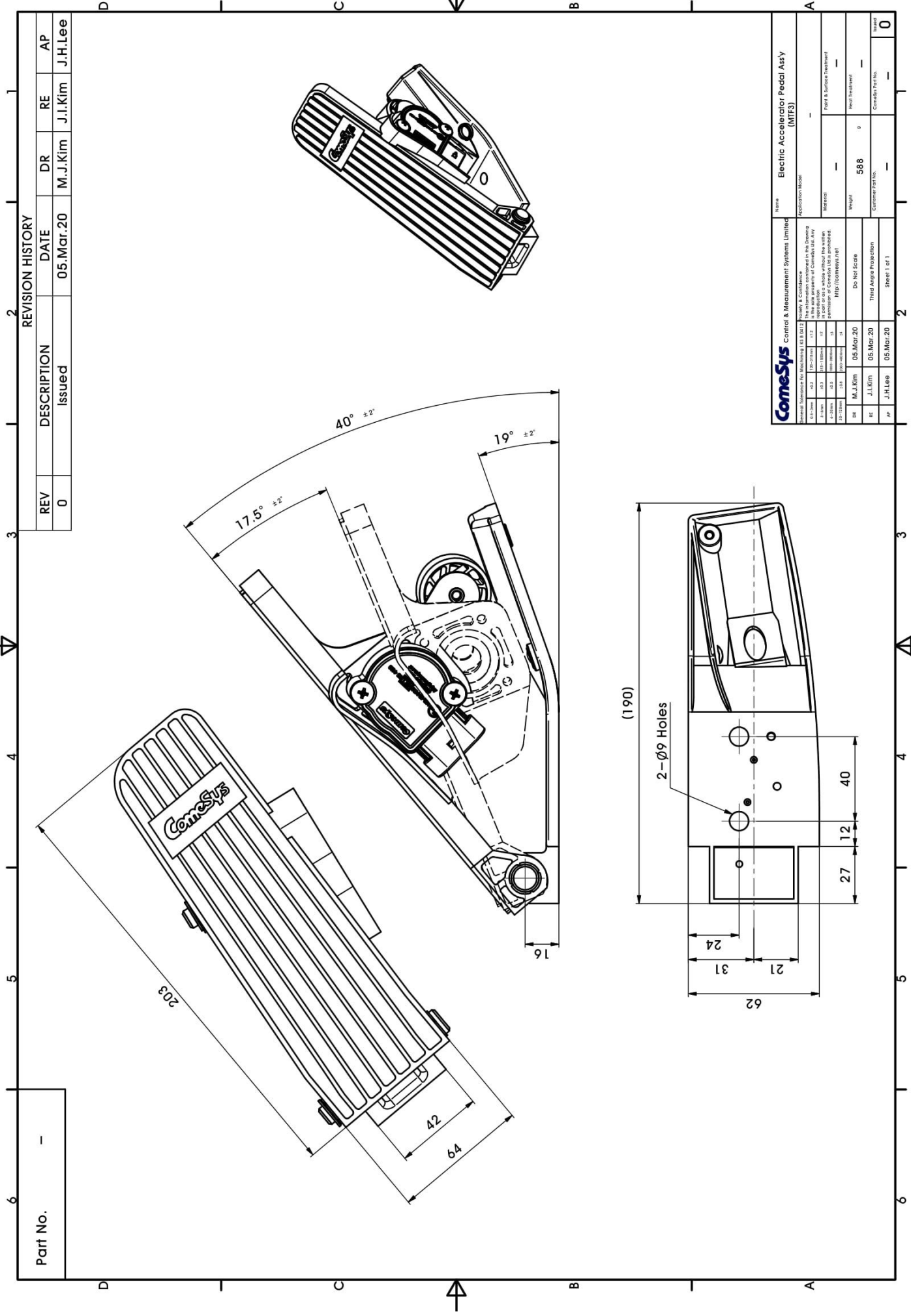
Pedal position feedback is provided by a contactless sensor connected to either an analog or a PWM (pulse width modulated) signal circuit, depending on the variant.

The no-load state can be detected either by an optocoupler or mechanically via a microswitch, according to the application.



## SPECIFICATIONS

PRODUCT LIFE	FULL TRAVEL CYCLES	10 MILLION
ELECTRONICS	SEAL INTEGRITY EMI	IP67 SAE J1843 Compliant
ELECTRICAL	OPERATING VOLTAGE OUTPUT SIGNAL	5, 12, 24, 48 72Vdc as requested Single, Dual output, PWM, CAN Bus as per SAE J-1939
PEDAL ANGLE	DEGREES	39°
MECHANICAL	LOAD VIBRATION	Initial Load : 0.9kgf (MIN), Full Throttle : 3.3kgf (MAX) 8 Hour, 3-Axis, Random Broadband up to 9G
ENVIRONMENTAL	OPERATING TEMP RANGE STORAGE TEMP RANGE HUMIDITY SAND/DUST	-40°C to 85°C -40°C to 85°C After Exposed to -32°C ~ 70°C (96%) Tested to SAE-J 1455
MATERIALS	TREADLE MOUNTING PLATE	PA66+GF30%, Aluminum (ADC12)



REVISION HISTORY			
REV	DESCRIPTION	DATE	AP
0	Issued	05.Mar.20	J.H.Lee

ComeSys Control & Measurement Systems Limited			
Electric Accelerator Pedal Assy (MIF3)			
The information contained in this drawing is the property of ComeSys Ltd. Any reproduction or use of this drawing without the written permission of ComeSys Ltd is prohibited. http://comesys.net			
Dr	M.J.Kim	05.Mar.20	Do Not Scale
Et	J.H.Lee	05.Mar.20	Third Angle Projection
Ap	J.H.Lee	05.Mar.20	Sheet 1 of 1