

The suspended pedal consisted of a base unit (nylon 66, GF 30%) and a pre-fitted pedal lever (Carbon Steel + Black Coated, Polished).

Twin return springs are used to replicate the pedal forces and direction-dependent hysteresis and to provide added safety.

Pedal position feed back is provided by a contactless sensor connected to either an analog or PWM signal circuit, depending on the variant. The no-load state can be detected either by an optocoupler or mechanically via a microswitch.



※ Arm is adjustable as per customer's request.

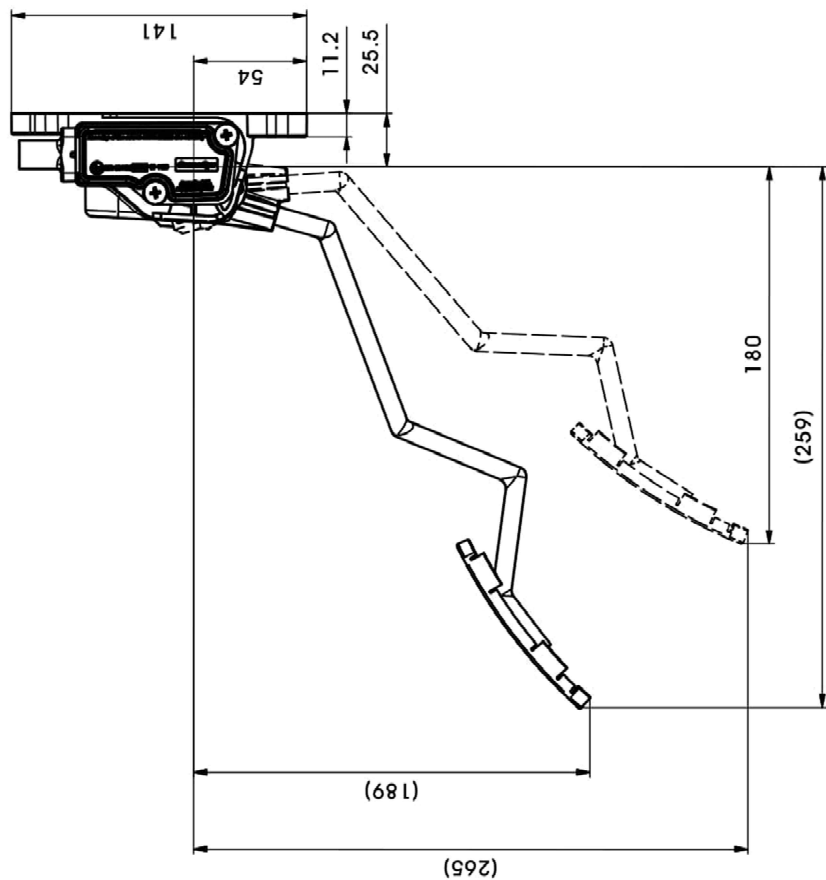
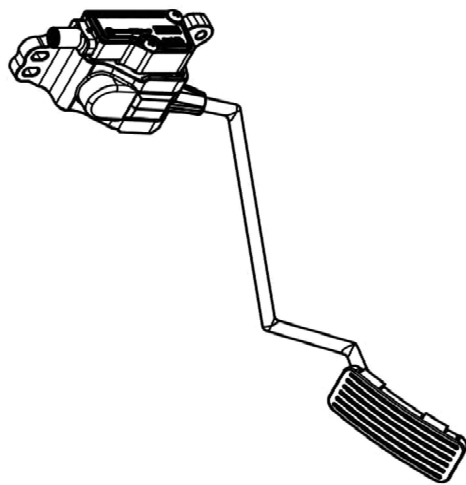
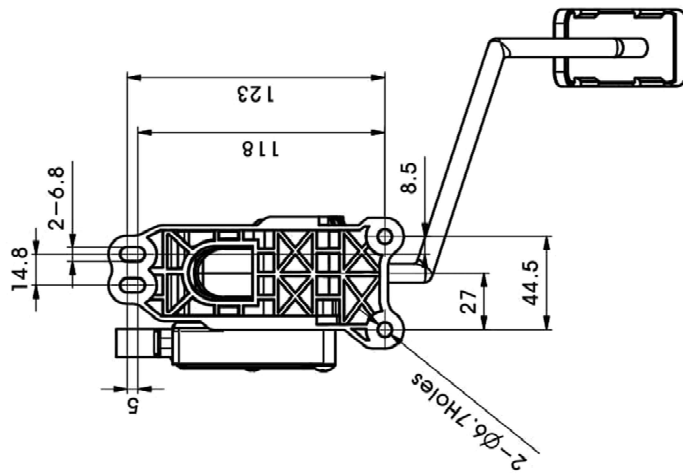
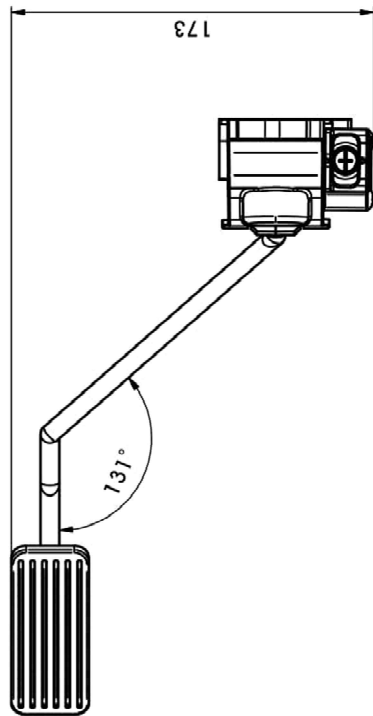
SPECIFICATIONS

PRODUCT LIFE	FULL TRAVEL CYCLES	10 MILLION
ELECTRONICS	SEAL INTEGRITY EMI	IP67 SAE J1843 Compliant
ELECTRICAL	OPERATING VOLTAGE OUTPUT SIGNAL	5, 12, 24, 48 72Vdc as requested Single, Dual output, PWM, CAN Bus as per SAE J-1939
PEDAL ANGLE	DEGREES	20° Angular Rotation
MECHANICAL	OPERATING FORCE VIBRATION	Initial Load : 5.3kgf (MIN), Full Throttle : 7kgf (MAX) 8 Hour, 3-Axis, Random Broadband up to 9G
ENVIRONMENTAL	OPERATING TEMP RANGE STORAGE TEMP RANGE HUMIDITY SAND/DUST	-40°C to 85°C -40°C to 85°C After Exposed to -32°C ~ 70°C (96%) Tested to SAE-J 1455
MATERIALS	BASE PLATE PEDAL ARM BODY FOOT TREADLE TREADLE COVER	PA66+GF30%, ALUMINUM DIECASTING (ADC12) SS400 TPE

Part No. -

REVISION HISTORY

REV	DESCRIPTION	DATE	DR	RE	AP
0	Issued	05.Mar.20	M.J.Kim	J.H.Lee	J.H.Lee

**ComeSys**

Control & Measurement Systems Limited

General Engineering for Mechanical (UK) Ltd

The information contained in this drawing

is the property of ComeSys Ltd. Any

reproduction or use without the

written permission of ComeSys Ltd is prohibited.

<http://comesys.net>Name Electric Accelerator Pedal Assy
(M159)

Application Model

Material

Weight

Customer Part No.

Sheet 1 of 1

Material

Weight

Customer Part No.

Sheet 1 of 1

Sheet 1 of 1

Sheet 1 of 1